



Home

About Us

Locations

Patient Info

News

Providers

Patient Portal

Contact Us

Schedule an Appointment

New to the site?
Click here to get started.

Practice

Find out about Insurance, Referrals & Prescriptions, Practice Guidelines and Making Appointments in this section.



[More](#)

Providers

Gateway providers include physicians, nurse practitioners, and physician assistants. Start here to choose a doctor.



[More](#)

Patient Portal

If you do not already have a patient account, call 610 594 7590 x 1027 for assistance.



[More](#)

[Insurance](#)

[Information](#)

[Referrals/Prescriptions](#)

[HIPAA Privacy Statement](#)

Resources:

Flu Vaccines will be available beginning September 10. REQUEST AN APPOINTMENT ONLINE or call now to schedule an appointment or find out about walk in hours!

If you are interested in signing up for our Patient Portal please inquire at the front desk during your next office visit. If you already have an account click the link below to log in.
[Login to the Patient Portal](#)

Patient Medical Records Transfer/Release Form: Please Print and complete the following form before your next visit.
[Records Transfer/Release Form](#)

If you are having any issues related to the portal please contact Denise at 610-594-7590 ext. 1027.



Your connection to better care.

- Home
- About Us
- Providers
- Locations
- Contact Us

Gateway Medical Associates Vision

To create a fully integrated primary care group that provides the leadership and excellence in the delivery of health care to the Chester County community. We will develop the ability to prudently apply resources allowing for the community to obtain a wide ranging continuum of health care, being responsible clinically and fiscally for the health status of the population we serve. We will strive as well for a practice environment that is professionally and personally satisfying.



Resources:

Providers

Gateway providers include physicians, nurse practitioners, and physician assistants. Start [here](#) to choose a doctor.



● More

Practice

Find out about Insurance, Referrals & Prescriptions, Practice Guidelines and Making Appointments in this section. ● More



Flu Vaccines will be available beginning September 10. REQUEST AN APPOINTMENT ONLINE or call now to schedule an appointment or find out about walk in hours!

If you are interested in signing up for our Patient Portal please inquire at the front desk during your next office visit. If you already have an account click the link below to log in.

[Login to the Patient Portal](#)

Patient Medical Records Transfer/Release Form: Please Print and complete the following form before your next visit. [Records Transfer/Release Form](#)

If you are having any issues related to the portal please contact Denise at 610-594-7590 ext. 1027.

[Insurance Information](#)

[Referrals](#)

[Prescriptions](#)

[Appointments](#)

[HIPAA Privacy Statement](#)

[Patient Education](#)

Your connection to better care.

Gateway Medical Associates Vision

To create a fully integrated primary care group that provides the leadership and excellence in the delivery of health care to the Chester County community. We will develop the ability to prudently apply resources allowing for the community to obtain a wide ranging continuum of health care, being responsible clinically and fiscally for the health status of the population we serve. We will strive as well for a practice environment that is professionally and personally satisfying.



Providers

Gateway providers include physicians, nurse practitioners, and physician assistants. Start here to choose a doctor.

[\[Details\]](#)



Practice

Find out about Insurance, Referrals & Prescriptions, Practice Guidelines and Making Appointments in this section.

[\[Details\]](#)



Resources:

Flu Vaccines will be available beginning September 10. REQUEST AN APPOINTMENT ONLINE or call now to schedule an appointment or find out about walk in hours!

If you are interested in signing up for our Patient Portal please inquire at the front desk during your next office visit. If you already have an account click the link below to log in.

[Login to the Patient Portal](#)

Patient Medical Records Transfer/Release Form: Please Print and complete the following form before your next visit. [Records Transfer/Release Form](#)

If you are having any issues related to the portal please contact Denise at 610-594-7590 ext. 1027.

Site Map GATEWAY MEDICAL ASSOCIATES - Public Site

GMA
10.18.10

Site Map: Gateway Medical Associates - Public Site
 Date: October 18, 2010
 Client: Gateway Medical Associates

This contains confidential information. No reproduction or other use in any manner outside the group directly responsible for evaluation of it's content by or for GSW.

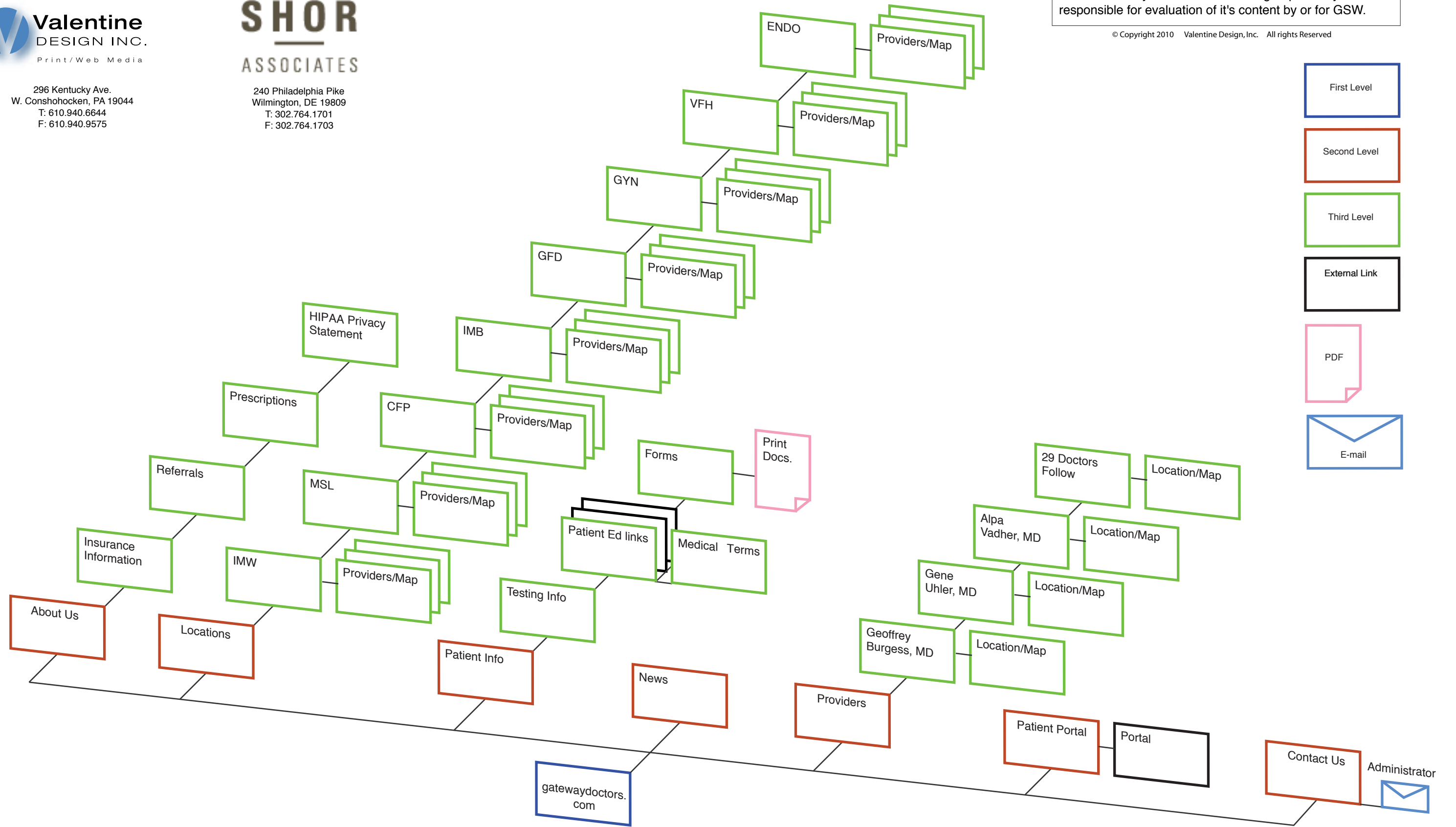
© Copyright 2010 Valentine Design, Inc. All rights Reserved



296 Kentucky Ave.
 W. Conshohocken, PA 19044
 T: 610.940.6644
 F: 610.940.9575



240 Philadelphia Pike
 Wilmington, DE 19809
 T: 302.764.1701
 F: 302.764.1703



- First Level
- Second Level
- Third Level
- External Link
- PDF
- E-mail



Your Connection to Better Care



- Home
- About Us
- Locations
- Patient Info
- News
- Providers
- Patient Portal
- Contact Us

What's New

Why Sign Up for the Patient Portal?

An explanation in clear definitions as to why and how a patient should sign up and the method for using Patient Portal effectively.

[More](#)



Patient Portal

If you would like to set up a Patient Portal account, call 610-423-8181 for assistance.



[More](#)

Your connection at home

If you are interested in signing up for our Patient Portal please inquire at the front desk during your next office visit. If you already have an account click the link right to log in. [Login to the Patient Portal](#)

Your connection to our office

If you are having any issues related to the portal please contact Us at 610-423-8181.



Your Connection to Better Care

[Home](#)

[About Us](#)

[Locations](#)

[Patient Info](#)

[News](#)

[Providers](#)

[Patient Portal](#)

[Contact Us](#)

Gateway Medical Associates



Founded in 1996, Gateway Medical Associates is a physician-owned practice consisting of physicians and allied health providers. Located in eight sites throughout Chester County, including Coatesville, Downingtown, and Lionville. Gateway aims to be the leader in providing excellent, full spectrum primary care to the residents of Chester County.

Gateway providers include physicians, nurse practitioners, and physician assistants. We provide care for acute problems as well as for chronic illnesses.

Our providers perform complete physical exams, primary gynecological care, preventive care, and are affiliated with Brandywine Hospital, Paoli Hospital and The Chester County Hospital. We also provide nursing home care at many locations.

The Gateway Vision

To create a fully integrated primary care group that provides the leadership and excellence in the delivery of health care to the Chester County community. We will develop the ability to prudently apply resources allowing for the community to obtain a wide ranging continuum of health care, being responsible clinically and fiscally for the health status of the population we serve. We will strive as well for a practice environment that is professionally and personally satisfying.



Your Connection to Better Care

[Home](#)

[About Us](#)

[Locations](#)

[Patient Info](#)

[News](#)

[Providers](#)

[Patient Portal](#)

[Contact Us](#)

Office Locations

Colonial Family Practice

217 Reeceville Road, Suite A, Coatesville, PA 19320
610-269-9448

Endocrinology Associates

795 E. Marshall St. Suite 102C West Chester, PA 19380
217 Reeceville Road, Suite B, Coatesville, PA 19320
610-431-7929

Gateway Family Practice Downingtown

101 Manor Avenue, Downingtown, PA 19335
610-269-7656

Gateway Gynecological Associates

217 Reeceville Road, Suite B, Coatesville, PA 19320
610-423-8300

Gateway Internal Medicine at Brandywine

217 Reeceville Road, Suite C, Coatesville, PA 19320
610-384-5110

Gateway Internal Medicine West Chester

520 Maple Avenue, Suite 4, West Chester, PA 19380
610-430-8200

Myers Squire & Limpert

1240 Wrights Lane, West Chester, PA 19382
610-431-1210

New location December 2010

Village Family Medicine At Lionville

93 West Devon Drive, Suite 100, Exton, PA 19341
610-321-0200





Your Connection to Better Care

Home

About Us

Locations

Patient Info

News

Providers

Patient Portal

Contact Us

Providers

Colonial Family Practice Coatsville

Geoffrey M. Burgess, M.D.
Gene F. Uhler, M.D.
Alpa Vadher, M.D.
Brian R. Boucher, M.D.
Marianne Nikas, M.D.
Angela Nicholas, M.D.
Martha Champlin, C.R.N.P.

Endocrinology Associates Coatesville and West Chester

Matthew S. Kane, M.D.
Mariele C. Briones, M.D.
Christopher Bruno, D.O.
Debbie Preble, C.R.N.P.
Lani Farrell, C.R.N.P.
Angela Kapsan, C.R.N.P.

Gateway Family Practice Downingtown Downingtown

Charles J. Barr, M.D.
Monica L. Norris, M.D.
Bao-Dan Tran Nguyen, D.O.

Gateway Gynecological Associates Coatsville

Christine W. Lyons, M.D.

Gateway Internal Medicine at Brandywine Downingtown

Kenneth D. Goldblum, M.D.
Vitasta Bamezai, M.D.

Gateway Internal Medicine West Chester West Chester

Harry J. Hutchinson, III, D.O.
Jean B. Stretton, M.D., M.B.A.
Douglas Atlas, M.D.
Jane Sunoo, M.D.
Dawn M. Thornton, D.O.
Darshana Tawde, M.D.

Myers Squire & Limpert West Chester

Boyd C. Myers, M.D.
Karen M. Squire, M.D.
George H. Limpert, M.D.
John F. Hornick, M.D.
Sue Villarini, C.R.N.P.
Anita Snyder, C.R.N.P.

Village Family Medicine At Lionville Lionville

John Khalifa, M.D.
I. Dennis Holgado, D.O.
Susan M. Kohli, MD





Your Connection to Better Care

Home

About Us

Locations

Patient Info

News

Providers

Patient Portal

Contact Us

Colonial Family Practice

217 Reeceville Road, Suite A
Coatesville, PA 19320
610-269-9448



New office image to come

Providers:

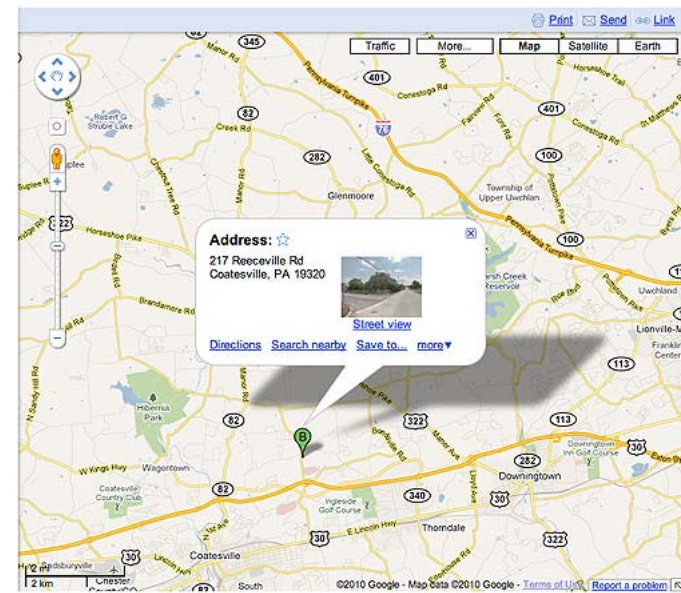
Geoffrey M. Burgess, M.D.
Gene F. Uhler, M.D.
Alpa Vadher, M.D.
Brian R. Boucher, M.D.
Marianne Nikas, M.D.
Angela Nicholas, M.D.
Martha Champlin, C.R.N.P.

Office Hours

Monday 8:00am - 5:00pm
Tuesday 7:00am - 8:00pm
Wednesday 8:00am - 7:00pm
Thursday 8:00am - 5:00pm
Friday 7:00am - 4:00pm
Saturday 9:00am to 1:00pm – Walk In Only
Sunday 1:00pm to 4:00pm – Walk in Only

Billing Information:

610-594-7590 ext. 1029



Directions From Downingtown:

Take Route 30 By-pass west to Brandywine Hospital Exit at the bottom of the ramp turn left and proceed to the traffic light. Turn right at the light onto Reeceville Road. Go past the entrance to the hospital and take the second entrance marked for emergencies. Take the first right into the parking lot and then a right into the actual parking lot for the "217" building. The office is on the left end of the building.

Directions From Coatesville:

Take Route 30 By-pass east to Brandywine Hospital Exit at the end of the ramp turn right onto Reeceville Road. Go past the entrance to the hospital and take the second entrance marked for emergencies. Take the first right into the parking lot and then a right into the actual parking lot for the "217" building. The office is on the left end of the building.



Your Connection to Better Care

[Home](#)

[About Us](#)

[Locations](#)

[Patient Info](#)

[News](#)

[Providers](#)

[Patient Portal](#)

[Contact Us](#)

Geoffrey M. Burgess, M.D.

Colonial Family Practice - Coatesville, PA



Geoffrey Burgess was raised in Broomall, Pennsylvania, where he attended Marple Newtown High School. He attended Villanova University and received a Bachelor of Arts in Humanities Science. Dr. Burgess attended the Milton S. Hershey Medical College of Pennsylvania State University where he received his medical degree and completed his residency in Family Medicine at the Medical College of Virginia, Fairfax satellite. Dr. Burgess returned to Pennsylvania and practiced for eight years with Peter C. Patukas prior to starting his own practice. Currently, Dr. Burgess has a clinical appointment at the M.S. Hershey Medical Center, Department of Family and Community Medicine, and was Past President of the Medical School Alumni. He continues to serve on numerous hospital committees. An important aspect of Dr. Burgess' life is his family which includes his wife, and two children.